

Health and social care

Entry 2012



Y OF HEALTH
SOCIAL CARE



The Faculty of Health and Social Care (FHSC) | 2

A vibrant research environment | 4

Taught programmes | 7

Master of Science (MSc)

Postgraduate Certificate (PGCert)

Professional Development Qualification Scheme (Level 7)

Research degrees | 25

Doctor of Philosophy (PhD)

Master of Philosophy (MPhil)

Master of Research (MRes)

This publication is intended principally as a guide for prospective students. The matters covered by it – academic and otherwise – are subject to change from time to time, both before and after students are admitted, and the information contained in it does not form part of any contract. While every reasonable precaution was taken in the production of this brochure, the University does not accept liability for any inaccuracies.

The contents of this publication are available online at www.hull.ac.uk/pgdocs or in other formats on request

The FHSC at Hull offers a range of postgraduate programmes which are designed to meet the professional and personal developmental needs of health and social care staff. Whether you enrol for a single module as part of our Professional Development Qualification Scheme (PDQS), a Postgraduate Certificate, a Postgraduate Diploma or a full Masters degree, our aim is to provide a learning experience which is stimulating, challenging and above all relevant to your professional needs in the modern workplace.

Our postgraduate students enter a rich educational environment in which we employ a wide range of learning and teaching approaches, including use of eBridge, our virtual learning environment. Students' professional knowledge is always valued, and they are active participants in learning.

Our postgraduate programmes are run by staff with leading-edge professional and theoretical knowledge. Most programmes can be taken full-time or part-time. The majority of applicants have a good first degree, but we also welcome applications from non-graduates with appropriate professional experience or an appropriate portfolio of learning accredited through APL.

The MSc programmes are designed to develop skills in critical thinking and focus on a number of specialist areas that have been identified as core to the needs of modern health and social care practice.

Apart from these Masters programmes, we offer a range of Postgraduate Certificates. These are awarded on successful completion of programmes containing three postgraduate modules (60 credits). Examples of these would include the PGCert in Knowledge Transfer, a unique programme which explores knowledge transfer in the public sector; the PGCert in Practitioner Research, which develops students' skills in reviewing the literature and applying research to practice; the PGCert Practice Teacher, which is primarily designed for community nurses with specialist or advanced qualifications (SPQ, SCPHN or ANP) who wish to become Practice Teachers, but is equally available to health care professionals in advanced roles with a remit for teaching, learning and assessing in the workplace; and the PGCert in Community Nursing, which is one of our routes to gaining a qualification as a Specialist Community Nurse or registering as a Specialist Community Public Health Nurse.

The strategic health authority supports the post-registration education required by a variety of service providers which is identified through its commissioning groups, partnership meetings and workforce-planning arrangements. These programmes are free at the point of delivery to students who work within the North and East Yorkshire and Northern Lincolnshire regions in the NHS / primary care trusts, the Ambulance Service, NHS Direct, hospices or the prison service, supported by their NHS and social care managers. All students who are eligible to study at postgraduate level may access the portfolio through flexible fee-paying methods.



A vibrant research environment

The Faculty of Health and Social Care (FHSC) at the University of Hull has a vibrant and productive research environment. A core of research-active staff undertake high-quality research, resulting in outputs of national and international standing and influence.

The FHSC has a research infrastructure which draws upon all the resources available in the wider University and beyond. Postgraduate research students benefit from the facilities of the Graduate School and are required to undertake modules forming part of the Postgraduate Training Scheme. This sits alongside faculty-based opportunities offering postgraduate students the opportunity to attend at least one research-focused event per week. Statistical support and advice is available to students requiring it.

The faculty strives to foster internationally competitive research, promote interdisciplinary work and maintain a culture of scholarship. There is cross-departmental cooperation and collaboration alongside a strong focus on interdisciplinary research and the provision of training. We collaborate on research-related activities with a range of faculties and departments, including the Hull York Medical School, the Postgraduate Medical Institute, the Faculty of Education, the Institute for Applied Ethics, and the Departments of Sport, Health and Exercise Science, Chemistry, Social Work, Psychology and Theology. There are established links with NHS organisations across Hull, East Yorkshire and North Lincolnshire.

Research within the faculty is methodologically broad and can therefore support students interested in quantitative, qualitative and mixed/multi-method research. Research output is generated through various research groupings under the umbrella heading of Health and Wellbeing. They are

- Social Aspects of Cancer
- Global Health
- Reproductive, Maternal and Family Health
- Social and Therapeutic Inclusion

The work of these groups and other research opportunities are outlined on page 5.



Social Aspects of Cancer

Aims to extend understanding of patient experience and professional structures and processes to improve cancer care at all stages from presentation to end of life. This is a particular area of research strength within the faculty, and research focuses on particular stages (e.g. initial presentation), location of care (e.g. primary care) and patient groups (e.g. gender-specific cancers)

Contact: Professor Philip Tovey (p.tovey@hull.ac.uk)

Global Health

Aims to examine health care provision and usage in global context, both to research context-specific issues and to generate understanding and health improvement across national boundaries. The faculty is engaged with a number of international collaborators and hosts a number of international PhD students.

Contact: Professor Philip Tovey or Professor Julie Jomeen (j.jomeen@hull.ac.uk).

Reproductive, Maternal and Family Health

Aims to explore and investigate the clinical and social interventions and processes that individuals encounter across their reproductive and family lives. A particular focus within this group is on maternity-based interventions and extending understanding of the psychosocial aspects of pregnancy, birth and motherhood to improve women's experiences. Other work within this group includes collaborative research on infants and children. This theme already supports a number of PhD students, both full-time and part-time.

Contact: Professor Julie Jomeen

Social and Therapeutic Inclusion

Aims to enhance understanding of both therapeutic practices on the margins of mainstream provision and of the processes central to social exclusion of particular groups and health inequalities in general. This work incorporates a clear policy and practice focus and includes aspects of professionalism and professional practice that are integral to health care.

Contact: Professor Philip Tovey

Interdisciplinary and collaborative work: new and emerging research groupings

The appointment of new staff to the faculty and the establishment of new academic units within the University have created fresh opportunities for collaborative and interdisciplinary working. Postgraduate students are able to take full advantage of these emerging research groups as well as our existing strengths in research.

General enquiries: contact Professor Julie Jomeen (Associate Dean, Research and Scholarship) or Dr Pat Pearcey (Graduate Research Director – p.a.pearcey@hull.ac.uk)





Master of Science (MSc) | 8

Advanced Practice | 8

Colonoscopy | 9

Gastrointestinal Endoscopy | 10

Health Professional Studies | 11

Leadership in Health and Social Care | 12

Leading and Managing in Health and Social Care | 13

Public Health | 14

Postgraduate Certificate (PGCert) | 15

Clinical Leadership | 15

Consultancy in Health and Social Care | 16

Creativity, Innovation and Change in Health and Social Care | 18

Knowledge Transfer | 19

Practice Teacher | 20

Practitioner Research | 21

Strategy, Policy and Leadership in Health and Social Care | 22

Professional Development Qualification Scheme (Level 7) | 23

Advanced Practice MSc (Master of Science)

FastFacts

Duration | Part-time 3 years (45 weeks per academic year)

Attendance | Modules are generally delivered in half-day sessions, so students attend one or two half-day sessions per week each semester. Every effort is made to plan the programme of study so that the two sessions occur on the same day, but this cannot always be guaranteed

Entry requirements | Normally a 2.2 Honours degree, but we will also consider candidates whose profile of academic and professional achievement demonstrates ability to study at Level 7

Fees | For students employed by an acute hospital trust or primary care trust within the Yorkshire and Humber Strategic Health Authority, there is no direct charge. All students outside the SHA catchment area should seek funding from their employer or self-fund

Location | All modules are taught at the University's Hull Campus, Cottingham Road

Contact | Liz Smith, Programme Leader:
01482 464696 | m.e.smith@hull.ac.uk

About the programme

This inter-professional programme has been designed to meet identified local and regional demand for advanced practice studies within health and social care. It is underpinned by national policies that address improved access to high-quality care and the promotion of patient/client choice such as *Our Health, Our Care, Our Say: A New Direction for Community Services* (DoH, 2006) and *High-Quality Care for All: NHS Next Stage Review* (DoH, 2008). Its aim is to provide a high-quality postgraduate education that will inform and enhance the student's professional function and enable him or her to contribute more effectively to the delivery of advanced practice.

Programme content

The programme comprises three compulsory modules and three optional modules (at 20 credits each) followed by a dissertation (60 credits).

Compulsory modules

- Advanced Critical Thinking Skills
- Advanced Health and Social Research
- Advanced Decision Making in Practice

Optional modules

- Clinical Advancement/Innovation (work-based learning)
- Engaging with Individuals and Groups
- Classic and Contemporary Issues in Healthcare Law and Ethics
- Understanding Commissioning and Influencing Policy
- Any other Level 7 module from the faculty's portfolio

Assessment

Our various assessment strategies include written assignments and presentations, the exact mix depending on the module. The final stage of the programme consists of a 15,000-word dissertation.

Special features

The distinctive features of this programme include

- a high degree of relevance to practice
- scope to enable learning across professional boundaries
- clear integration of theory and practice through the production of work-related assignments
- flexibility – facilitating study around work/life commitments

How to apply

Anyone wishing to obtain funding via the SHA should apply through their NHS training department in the first instance. All other applicants should contact our Admissions Service at fhsc.admiss@hull.ac.uk or on 01482 466786/466770. Application forms are also available under 'Nursing' at www.hull.ac.uk/admissions.

Colonoscopy

MSc (Master of Science)

FastFacts

Duration | Full-time 1 year or part-time 2 years (45 weeks per academic year)

Attendance | Modules are predominantly delivered online via the eBridge virtual learning environment and supported with study days. Students are expected to maintain regular activity within the online environment as part of the attendance requirements. Some modules may be supported with a classroom-based workshop

Entry requirements | Normally a 2.2 Honours degree, but we will also consider candidates whose profile of academic and professional achievement demonstrates ability to study at Level 7

Fees | For students employed by an acute hospital trust or primary care trust within the Yorkshire and Humber Strategic Health Authority, there is no direct charge. All students outside the SHA catchment area should seek funding from their employer or self-fund. For details of costs, please contact the Programme Leader

Location | All modules are based at the University's Hull Campus, Cottingham Road, but most teaching is delivered online

Contact | Dr Angela Gardiner, Programme Leader:
01482 463462 | a.b.gardiner@hull.ac.uk

About the programme

This inter-professional programme has been designed to meet identified needs within the specialised area of colonoscopy and will be of value not only to medical trainees but also to nurses who have completed relevant education and training programmes that demonstrate an aptitude to undertake this MSc. It will be of considerable value for non-medical education and training and allow the recognition of advanced practitioners.

The programme is in line with the publications of relevant accrediting bodies, particularly the Joint Advisory Group on Endoscopy Training. It gives fundamental training in the understanding of research and education and a broad selection of colonoscopy-related theory. For some trainees it will also impart the skills necessary to go beyond competence and to advance their practical skills in colonoscopy to a high level.

Programme content

The programme comprises six compulsory modules followed by a dissertation, as follows:

- Advanced Critical Thinking Skills (20 credits)
- Research in the Clinical Sciences (20 credits)
- Education in Clinical Practice (20 credits)
- Theoretical Principles of Colonoscopy (double module – 40 credits)
- The Practice of Colonoscopy (20 credits)
- Dissertation (60 credits)

Assessment

Our various assessment strategies include written assignments, case studies, grant application completion and portfolio-based assessments. The final stage of the programme consists of a 15,000-word dissertation.

Special features

The distinctive features of this programme include

- a high degree of relevance to students' chosen specialised field
- value to the student and potential employers
- scope for extended learning across professional groups

How to apply

Anyone wishing to obtain funding via the SHA should apply through their NHS training department in the first instance. All other applicants should contact our Admissions Service at fhsc.admiss@hull.ac.uk or on 01482 466786/466770. Application forms are also available under 'Nursing' at www.hull.ac.uk/admissions.

GI Endoscopy

MSc (Master of Science)

FastFacts

Duration | Part-time 2 years (45 weeks per academic year)

Attendance | Modules are predominantly delivered online via the eBridge virtual learning environment and supported with study days. Students are expected to maintain regular activity within the online environment as part of the attendance requirements. Some modules may be supported with a classroom-based workshop

Entry requirements | Normally a 2.2 Honours degree, but we will also consider candidates whose profile of academic and professional achievement demonstrates ability to study at Level 7

Fees | For students employed by an acute hospital trust or primary care trust within the Yorkshire and Humber Strategic Health Authority, there is no direct charge. All students outside the SHA catchment area should seek funding from their employer or self-fund. For details of costs, please contact the Programme Leader

Location | All modules are based at the University's Hull Campus, Cottingham Road, but most teaching is delivered online

Contact | Dr Angela Gardiner, Programme Leader:
01482 463462 | a.b.gardiner@hull.ac.uk

About the programme

This inter-professional programme has been designed to meet identified needs within the specialised area of endoscopy and will be of value not only to medical trainees but also to nurses who have completed relevant education and training programmes that demonstrate an aptitude to undertake this MSc. It will be of considerable value for non-medical education and training and allow the recognition of advanced practitioners.

The programme is in line with the publications of relevant accrediting bodies, particularly the Joint Advisory Group on Endoscopy Training. It gives fundamental training in the understanding of research and education and a broad selection of endoscopy-related theory. For some trainees it will also impart the skills necessary to go beyond competence and to advance their practical skills in colonoscopy to a high level.

Programme content

The programme comprises five compulsory modules and one optional module followed by a dissertation.

Compulsory modules

- Advanced Critical Thinking Skills (20 credits)
- Research in the Clinical Sciences (20 credits)
- Education in Clinical Practice (20 credits)
- Theoretical Advanced Endoscopy (double module – 40 credits)
- Dissertation (60 credits)

Optional modules

- Advanced Diagnostic Endoscopy (20 credits)
- Interventional and Therapeutic Upper GI Endoscopy (20 credits)
- Diagnostic and Interventional Endoscopic Ultrasound (20 credits)

Assessment

Our various assessment strategies include written assignments, case studies, grant application completion and portfolio-based assessments. The final stage of the programme consists of a 15,000-word dissertation.

Special features

The distinctive features of this programme include

- a high degree of relevance to students' chosen specialised field
- value to the student and potential employers
- scope for extended learning across professional groups

How to apply

Anyone wishing to obtain funding via the SHA should apply through their NHS training department in the first instance. All other applicants should contact our Admissions Service at fhsc.admiss@hull.ac.uk or on 01482 466786/466770. Application forms are also available under 'Nursing' at www.hull.ac.uk/admissions.

Health Professional Studies

MSc (Master of Science)

FastFacts

Duration | Full-time 1 year; part-time 2 or 3 years

Attendance | One day per week

Entry requirements | Normally a good first degree (i.e. 2.1 or above). However, the programme may be accessed by professionals who have post-qualifying experience and certified learning equivalent to graduate status, and who can demonstrate the ability to study at Level 7 (Masters)

Fees | Most applicants from the local area will be eligible for funding via the Faculty of Health and Social Care's contract with the strategic health authority. There are opportunities for self-funding – further information will be provided on application

Location | Hull Campus

Contact | Dr Mary Laurenson, Programme Leader:
01482 464630 | m.c.laurenson@hull.ac.uk
Ros Glanville, Programme Secretary:
01482 464645 | r.j.glanville@hull.ac.uk

About the programme

The MSc in Health Professional Studies is designed to meet the needs of a range of health and social care professionals who are already practising at an advanced level or aspire to do so. The modules aim to provide a toolkit of knowledge and critical-thinking skills to support advanced practice and enhance patient/client care. Practitioners who successfully complete this programme can demonstrate to their employers that they are knowledgeable and capable practitioners, able to contribute to the development of evidence-based practice.

If individual circumstances dictate, it is possible for students to step off the programme with either a Postgraduate Certificate or a Postgraduate Diploma.

Programme content

This programme's generic nature means that it is suitable for a range of different health and social care practitioners, the modules studied being equally applicable in a range of different care or work settings. The content covers a range of different topics and knowledge bases relevant to contemporary practice. It is expected that (with support from tutorial staff) students will identify areas of interest pertinent to their area of practice and apply the module content.

Core modules

Unless otherwise indicated, all modules are worth 20 credits.

- Making a Difference through Work-Based Learning
- Advanced Health and Social Research
- Advanced Critical Thinking Skills
- Dissertation (60 Credits)

Optional modules

- Literature Review Methods
- Practitioner as Leader
- Leading Online Working
- Women and Mental Health
- Leadership: Self as Leader
- Leadership in Context: Developing Strategic Influence
- Leading Service Development: The Challenge of Change
- Practice Teaching in Context
- Effective Practice Teaching
- Classical and Contemporary Issues in Healthcare Law and Ethics

Further programme details

Applicants are taken through programme planning by the Programme Leader before selecting their optional modules. This reduces the possibility of timetable clashes and ensures that students understand any specific module requirements.

Assessment

Most modules are assessed by written assignments such as literature reviews, learning contracts, essays and portfolios.

Special features

The department has developed strong partnership working with local NHS, third-sector and private providers. Programmes and modules are developed to meet local as well as national demands and policy changes. In 2008 the QAA Major Subject Review indicated confidence in academic and practitioner standards.

How to apply

Anyone wishing to obtain funding via the SHA should apply through their NHS training department in the first instance. All other applicants should contact our Admissions Service at fhsc.admiss@hull.ac.uk or on 01482 466786/466770. Application forms are also available under 'Nursing' at www.hull.ac.uk/admissions.

Leadership in Health and Social Care

MSc (Master of Science)

FastFacts

Duration | Up to 3 years part-time. Full-time option also available

Attendance | Half a day per week for part-time students

Entry requirements | Normally a 2.1 Honours degree, but we will also consider candidates whose profile of academic and professional achievement demonstrates ability to study at Level 7. APEL will be considered where students are able to evidence achievement of any of the module learning outcomes (with the exception of those in the final stage)

Fees | Most applicants from the local area will be eligible for funding via the Faculty of Health and Social Care's contract with the strategic health authority. There are opportunities for self-funding – further information will be provided on application

Location | Hull Campus

Contact | Tracey Heath, Programme Leader:
01482 464519 | t.n.heath@hull.ac.uk
Ros Glanville, Programme Secretary:
01482 464645 | r.j.glanville@hull.ac.uk

About the programme

The programme aims to provide a high-quality educational experience that will inform and enhance your role as a leader within the context of health and social care. It is suitable for people from a variety of backgrounds, whether practice-based, administrative or managerial. The component modules will enable you to

- clearly articulate your leadership role and priorities
- critically evaluate and develop your leadership approach

Programme content

There are five core modules:

- Self as Leader
- Developing Strategic Influence
- The Challenge of Change
- Making a Difference through Work-Based Learning
- Literature Review Methods

In addition, you will undertake

- an optional module selected from any of those available within our Masters-level portfolio
- a dissertation or a consultancy project

Further details can be found at www.hull.ac.uk/fhsc.

Further programme details

Various learning and teaching methods are used, including discussions, debates, seminars, workshops and lead lectures. Students are provided with directed-study materials both to support classroom-based sessions and to facilitate further independent enquiry. Structured group and individual tutorials are also provided.

The University's virtual learning environment (VLE) is used to provide access to learning resources, support online discussion and facilitate networking. Selected sessions are delivered via the VLE.

Assessment

Assessment strategies include self-evaluations, development plans, case studies, work-based projects, essays and the production of a protocol for a systematic review.

Special features

The distinctive features of this programme include

- focus on the student's own personal and professional development as a leader
- emphasis on the policy and political context in which leaders operate
- focus on the student's role as an agent of innovation and change

How to apply

Anyone wishing to obtain funding via the SHA should apply through their NHS training department in the first instance. All other applicants should contact our Admissions Service at fhsc.admiss@hull.ac.uk or on 01482 466786/466770. Application forms are also available under 'Nursing' at www.hull.ac.uk/admissions.

Leading and Managing in Health and Social Care

MSc (Master of Science)

FastFacts

Duration | Up to 3 years part-time

Attendance | Half a day per week for part-time students

Entry requirements | Normally a 2.1 Honours degree, but we will also consider candidates whose profile of academic and professional achievement demonstrates ability to study at Level 7. APEL will be considered where students are able to evidence achievement of any of the module learning outcomes (with the exception of those in the final stage)

Fees | Most applicants from the local area will be eligible for funding via the Faculty of Health and Social Care's contract with the strategic health authority. There are opportunities for self-funding – further information will be provided on application

Location | Hull Campus

Contact | Tracey Heath, Programme Leader:
01482 464519 | t.n.heath@hull.ac.uk
Ros Glanville, Programme Secretary:
01482 464645 | r.j.glanville@hull.ac.uk

About the programme

Over the last 10 years considerable importance has been attached to public-sector leadership and management, particularly in the fields of health and social care. Leadership and management are associated with the modernisation, as well as the safe and effective delivery, of services in both public- and private-sector environments.

The overarching aim of the programme is to provide a high-quality educational experience that will inform and enhance the students' roles as leaders and managers within health and social care organisations.

In line with this, the programme will enable you to

- clearly articulate your leadership/management role and priorities
- critically evaluate and develop your leadership/management approach

Programme content

There are six core modules:

- Self as Leader
- Developing Strategic Influence
- The Challenge of Change
- Leading and Managing in Context: A Policy Perspective
- The Nature of Management
- Literature Review Methods

In addition, you will undertake

- a dissertation or a consultancy project

Further details can be found at www.hull.ac.uk/fhsc.

Further programme details

Various learning and teaching methods are used, including discussions, debates, seminars, workshops and lead lectures. Students are provided with directed-study materials both to support classroom-based sessions and to facilitate further independent enquiry. Structured group and individual tutorials are also provided.

The University's virtual learning environment (VLE) is used to provide access to learning resources, support online discussion and facilitate networking. Selected sessions are delivered via the VLE.

Assessment

Assessment strategies include critical evaluation of own role, development plans, case studies, work-based projects, essays and the production of a protocol for a systematic review.

Special features

The distinctive features of this programme include

- focus on the student's own personal and professional development as a leader
- opportunity for students to use diagnostic tools to aid their leadership/management development and action planning
- emphasis on the leadership/management challenges associated with collaborative inter-agency and inter-professional working

How to apply

Anyone wishing to obtain funding via the SHA should apply through their NHS training department in the first instance. All other applicants should contact our Admissions Service at fhsc.admiss@hull.ac.uk or on 01482 466786/466770. Application forms are also available under 'Nursing' at www.hull.ac.uk/admissions.

Public Health

MSc (Master of Science)

FastFacts

Duration | Full-time 1 year or part-time 3 years (45 weeks per academic year)

Attendance | Depends on the selection of modules and mode of study, but part-time is typically 1 day each week over Semesters 1 and 2 during the first two years, followed by a dissertation in Year 3. Full-time students can expect to attend up to three days in Semesters 1 and 2, before producing a dissertation in Semester 3

Entry requirements | Normally a 2.2 Honours degree, but we will also consider candidates whose profile of academic and professional achievement demonstrates ability to study at Level 7

Fees | For students employed by an acute hospital trust or primary care trust within the Yorkshire and Humber Strategic Health Authority, there is no direct charge. All students outside the SHA catchment area should seek funding from their employer or self-fund

Location | Hull Campus

Contact | Helen Layton, Programme Leader:
01482 464538 | h.layton@hull.ac.uk

About the programme

This modular programme examines aspects of public health from the perspectives of practitioners working in various health and social care settings. It is available to anyone who makes a positive contribution to public health and not only to those working specifically in the field of public health. It is designed to develop knowledge and understanding of public health, including theory, policy and practice, as well as skills in critical thinking, collaboration and research.

Programme content

The programme comprises four compulsory modules and two optional modules (at 20 credits each) followed by a dissertation (60 credits).

Compulsory modules

- Philosophies and Ideologies in Public Health
- Advanced Critical Thinking Skills
- Advanced Public Health Practice
- Advanced Health and Social Research

Optional modules

- Clinical Advancement/Innovation (work-based learning)
- Engaging with Individuals and Groups
- Classic and Contemporary Issues in Healthcare Law and Ethics
- Any other Level 7 module from the faculty's portfolio
- Understanding Commissioning and Influencing Policy (available to part-time students only)

Assessment

Our various assessment strategies include written assignments and presentations, the exact mix depending on the module. The final stage of the programme consists of a 15,000-word dissertation.

Special features

This programme is designed to appeal to a broad range of applicants, including

- health care professionals
- teachers
- community development workers
- health promotion practitioners

It allows students to develop and expand their understanding and skills in public health, and to apply these in their own specific areas of work.

How to apply

Anyone wishing to obtain funding via the SHA should apply through their NHS training department in the first instance. All other applicants should contact our Admissions Service at fhsc.admiss@hull.ac.uk or on 01482 466786/466770. Application forms are also available under 'Nursing' at www.hull.ac.uk/admissions.

Clinical Leadership

PGCert (Postgraduate Certificate)

FastFacts

Duration | Part-time 1 year

Attendance | Half a day per week

Entry requirements | Normally a 2.1 Honours degree, but we will also consider candidates whose profile of academic and professional achievement demonstrates ability to study at Level 7. APEL will be considered where students are able to evidence achievement of any of the module learning outcomes

Fees | Most applicants from the local area will be eligible for funding via the Faculty of Health and Social Care's contract with the strategic health authority. There are opportunities for self-funding – further information will be provided on application

Location | Hull Campus

Contact | Tracey Heath, Programme Leader:
01482 464519 | t.n.heath@hull.ac.uk
Ros Glanville, Programme Secretary:
01482 464645 | r.j.glanville@hull.ac.uk

About the programme

The overarching aim of the programme is to provide a high-quality educational experience that will inform and enhance the students' roles as clinical leaders. In line with this, the programme will enable you to

- clearly articulate your clinical leadership role
- critically evaluate and develop your role as a clinical leader

You will be provided with the opportunity to examine your own professional role as a leader, evaluate the effectiveness of a health care intervention and develop strategies to address a workplace challenge or opportunity.

Programme content

The programme comprises three modules:

- Self as Leader
- Effective Health Care
- Making a Difference through Work-Based Learning

Further details can be found at www.hull.ac.uk/fhsc.

Further programme details

Various learning and teaching methods are used, including discussions, debates, seminars, workshops and lead lectures. Students are provided with directed-study materials both to support classroom-based sessions and to facilitate further independent enquiry. Structured group and individual tutorials are also provided.

The University's virtual learning environment (VLE) is used to provide access to learning resources, support online discussion and facilitate networking. Selected sessions are delivered via the VLE.

Assessment

Assessment strategies include critical evaluation of own role, development plan, essay and work-based project.

Special features

The special features of this programme include

- focus on the student's own personal and professional development as a clinical leader
- emphasis on the leadership challenges associated with collaborative inter-agency and inter-professional working

How to apply

Anyone wishing to obtain funding via the SHA should apply through their NHS training department in the first instance. All other applicants should contact our Admissions Service at fhsc.admiss@hull.ac.uk or on 01482 466786/466770. Application forms are also available under 'Nursing' at www.hull.ac.uk/admissions.

Consultancy in Health and Social Care PGCert (Postgraduate Certificate)

FastFacts

Duration | Part-time 1 year

Attendance | Half a day per week

Entry requirements | Normally a 2.1 Honours degree, but we will also consider candidates whose profile of academic and professional achievement demonstrates ability to study at Level 7. APEL will be considered where students are able to evidence achievement of any of the module learning outcomes

Fees | Most applicants from the local area will be eligible for funding via the Faculty of Health and Social Care's contract with the strategic health authority. There are opportunities for self-funding – further information will be provided on application

Location | Hull Campus

Contact | Tracey Heath, Programme Leader:

01482 464519 | t.n.heath@hull.ac.uk

Ros Glanville, Programme Secretary:

01482 464645 | r.j.glanville@hull.ac.uk

About the programme

The health and social care arena is changing rapidly, and this presents new opportunities in the world of work. Consultancy skills are increasingly sought after and arguably vital to managers and leaders, whether acting as an internal or an external resource for organisations. This programme encourages students to reflect on the relevance of consultancy to their roles and enhances their confidence in scoping, designing and executing consultancy projects.

The overarching aim of the programme is to provide a high-quality educational experience that will inform and enhance the students' roles as consultants. In line with this, the programme will

- increase your insight into the concept of consultancy, its processes and its implications/potential for professional practice
- develop your knowledge, skills and confidence in the use of consultancy methods and techniques

Programme content

The programme comprises three modules:

- Consultancy Skills
- Challenge of Change
- Making a Difference through Work-Based Learning

Further details can be found at www.hull.ac.uk/fhsc.

Further programme details

Various learning and teaching methods are used, including discussions, debates, seminars, workshops and lead lectures. Students are provided with directed-study materials both to support classroom-based sessions and to facilitate further independent enquiry. Structured group and individual tutorials are also provided.

The University's virtual learning environment (VLE) is used to provide access to learning resources, support online discussion and facilitate networking. Selected sessions are delivered via the VLE.

Assessment

Assessment strategies include critical evaluation of own role, project proposal, case study and work-based project.

Special features

Special features of this programme include

- focus on the student's own personal and professional development as a consultant
- focus on the consultant as an agent of change

How to apply

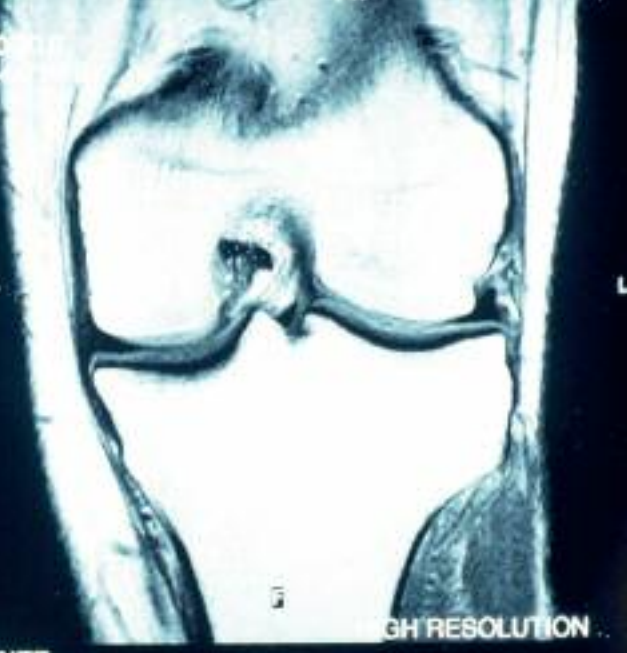
Anyone wishing to obtain funding via the SHA should apply through their NHS training department in the first instance. All other applicants should contact our Admissions Service at fhsc.admiss@hull.ac.uk or on 01482 466786/466770. Application forms are also available under 'Nursing' at www.hull.ac.uk/admissions.



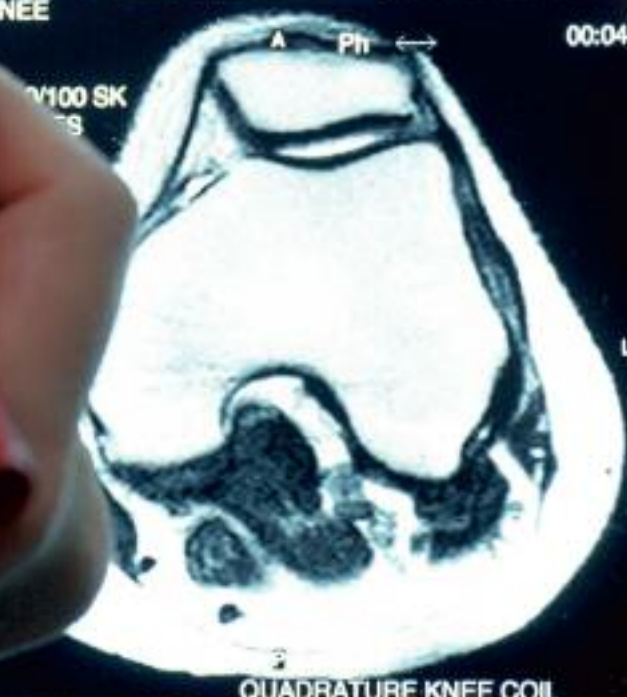
EF 10
256x256
AIRIS II KNEE



2D SE 450/11.0 FA:70 OSP
COR 180
384x384
S# 5/8
NSA 2(1)



512x512
AIRIS II KNEE



512x512
AIRIS II ANKLE



2D GE 500/11.0 FA:70 OSP
SAG 150 3.0 FFS
224x192
S# 9/14
NSA 4(2)



QUADRATURE KNEE COIL

Creativity, Innovation and Change in Health and Social Care

PGCert (Postgraduate Certificate)

FastFacts

Duration | Part-time 1 year

Attendance | Half a day per week

Entry requirements | Normally a 2.1 Honours degree, but we will also consider candidates whose profile of academic and professional achievement demonstrates ability to study at Level 7. APEL will be considered where students are able to evidence achievement of any of the module learning outcomes

Fees | Most applicants from the local area will be eligible for funding via the Faculty of Health and Social Care's contract with the strategic health authority. There are opportunities for self-funding – further information will be provided on application

Location | Hull Campus

Contact | Tracey Heath, Programme Leader:

01482 464519 | t.n.heath@hull.ac.uk

Ros Glanville, Programme Secretary:

01482 464645 | r.j.glanville@hull.ac.uk

About the programme

Creativity and innovation are crucial to the success of organisations in the 21st century. Working environments are sought where people's creativity is encouraged and where new ideas can be nurtured and developed into innovation that transforms organisations and leads to the production of new commodities and practices and the delivery of new services.

The overarching aim of the programme is to provide a high-quality educational experience that will inform and enhance the students' roles as innovators and change agents in professional contexts. In line with this, the programme will enable you to

- clearly articulate the role of creativity, innovation and change in the successful modernisation of services
- critically evaluate and develop your role as an agent of creativity, innovation and successful change

Programme content

The programme comprises three modules:

- Creativity and Innovation
- The Challenge of Change
- Making a Difference through Work-Based Learning

Further programme details

Various learning and teaching methods are used, including discussions, debates, seminars, workshops and lead lectures. Students are provided with directed-study materials both to support classroom-based sessions and to facilitate further independent enquiry. Structured group and individual tutorials are also provided.

The University's virtual learning environment (VLE) is used to provide access to learning resources, support online discussion and facilitate networking. Selected sessions are delivered via the VLE.

Assessment

Assessment strategies include essay, case study and work-based project.

Special features

The special features of this programme include

- focus on the student's own personal and professional development as an agent of creativity, innovation and change
- emphasis on the challenges associated with creativity, innovation and change agency within inter-agency and inter-professional contexts

How to apply

Anyone wishing to obtain funding via the SHA should apply through their NHS training department in the first instance. All other applicants should contact our Admissions Service at fhsc.admiss@hull.ac.uk or on 01482 466786/466770. Application forms are also available under 'Nursing' at www.hull.ac.uk/admissions.

Knowledge Transfer PGCert (Postgraduate Certificate)

FastFacts

Duration | Part-time 1 year

Attendance | Half a day per week

Entry requirements | Normally a 2.1 Honours degree, but we will also consider candidates whose profile of academic and professional achievement demonstrates ability to study at Level 7. APEL will be considered where students are able to evidence achievement of any of the module learning outcomes

Fees | Most applicants from the local area will be eligible for funding via the Faculty of Health and Social Care's contract with the strategic health authority. There are opportunities for self-funding – further information will be provided on application

Location | Hull Campus

Contact | Tracey Heath, Programme Leader:
01482 464519 | t.n.heath@hull.ac.uk
Ros Glanville, Programme Secretary:
01482 464645 | r.j.glanville@hull.ac.uk

About the programme

The importance of knowledge to organisations has been recognised for many years. The programme represents a refocusing of thought and practice in this area and is primarily aimed at individuals employed within the context of health and social care. During the modules you will consider the following questions.

- How do we 'know' things?
- How do we access, review and make sense of the information around us?
- How do we capture, share and harness knowledge in order to improve practice and services?
- How do we learn from experience and transfer that learning to others?
- How do organisations remember, learn and realise their potential?
- How do organisations more effectively manage and harness the knowledge and skills of staff?

If you feel that you are surrounded by information and knowledgeable people, but that the potential of these assets is not always realised, this course could be for you.

The overarching aim of the programme is to provide a high-quality educational experience that will inform and enhance the students' knowledge and skills in relation to knowledge transfer within their chosen organisational context.

Specifically, the concepts of 'knowledge' and 'knowledge transfer' will be explored through the use of a variety of perspectives drawing upon relevant research, conceptual frameworks, models, theories and practical tools.

Programme content

The programme comprises three modules:

- Literature Review Methods
- Understanding and Promoting Knowledge Transfer
- Making a Difference through Work-Based Learning

Further details of modules can be found at www.hull.ac.uk/fhsc.

Further programme details

A range of student-centred learning and teaching methods are used, including workshops, discussions, debates, group work, work-based learning and blended learning. More traditional approaches such as lectures are also used where appropriate.

Assessment

Assessment strategies include written assignment, presentation, development of protocol for systematic review, project proposal and report.

Special features

Special features of this programme include

- a public-sector focus (knowledge transfer in the commercial sector has formed the primary focus of developments in other institutions)
- clear integration of theory and practice through the production of work-related assignments

How to apply

Anyone wishing to obtain funding via the SHA should apply through their NHS training department in the first instance. All other applicants should contact our Admissions Service at fhsc.admiss@hull.ac.uk or on 01482 466786/466770. Application forms are also available under 'Nursing' at www.hull.ac.uk/admissions.

Practice Teacher

PGCert (Postgraduate Certificate)

FastFacts

Duration | Part-time 1 year

Attendance and location | At least 30 days' protected learning time must be spent in both academic and practice settings. Eleven days will be spent at the University. Attendance days to be advised

Entry requirements | Current NMC registration and a specialist practitioner qualification, plus prior experience as a mentor/assessor and evidence of recent academic study. See the text for further details

Fees | Most local applicants will be eligible for funding via the Faculty of Health and Social Care's contract with the strategic health authority. Self-funding is possible – further information will be provided on application

Contact | Zoe Wilkes: 01482 463618 | z.wilkes@hull.ac.uk
Sarah Camm, Programme Secretary: 01482 464660 | s.l.camm@hull.ac.uk

About the programme

This programme is primarily designed for nurses who would like to take on the role of assessing students' fitness for practice as Specialist Community Public Health Nurses, Specialist Practitioners or Advanced Nurse Practitioners. By completion, practitioners will be facilitating and assessing learning in academic and practice settings at an advanced level. This presents opportunities for those who wish to develop their careers as educators. The Postgraduate Certificate can be the first step towards a Postgraduate Diploma or an MSc in Health Professional Studies.

Programme content

There is a combination of University-based and work-based learning. The two theory modules are based around themed study days covering the context of practice; establishing effective working relationships; evidence-based practice; leadership; creating an environment for learning; facilitation of learning; assessment and accountability; and evaluation of learning. Learning methods include workshops, discussions, group work and lead lectures. You are expected to take an active part in your learning. A virtual learning environment is used to support learning and teaching activities. The work-based module involves being placed with an experienced practice teacher who facilitates your access to an appropriate student, and who is responsible for supervising your progress and 'signing off' your achievement of the learning outcomes.

Core modules

- Practice Teaching in Context (theory)
- Effective Practice Teaching (theory)
- Specialist Practice Teaching (practice/work-based)

Optional modules

There are no optional modules for this stage of the programme. Should applicants wish to register for the Postgraduate Diploma or MSc programme, planning with the Programme Leader will help them to identify the best options to choose.

Further programme details

For the Specialist Practice Teaching module, applicants must be supervised by a qualified and experienced practice teacher. Availability of this practice teacher will be confirmed before the programme starts.

Assessment

A number of different assessment strategies are used, including a written strategy, participation in group presentations, self- and peer review and completion of a portfolio to demonstrate achievement of learning outcomes in practice.

Special features

This programme is approved by the NMC, and on successful completion practitioners can gain entry to the live practice teacher register for their employing organisations. Key components of the NHS Knowledge and Skills Framework are embedded in the programme, enabling successful students to demonstrate that they meet milestones for pay progression. The programme also meets the requirements for Level 3 mentor preparation identified by the Association of Operating Department Practitioners.

Entry criteria

You should have a current entry on the same part or sub-part of the Nursing and Midwifery Council register as the students that you will be assessing. You should have developed your knowledge, skills and competence beyond registration and gained a specialist practitioner qualification relevant to your field of practice. You should have prior experience as a mentor/assessor, having previously undertaken preparation for this role. Evidence of recent academic study (normally within the last five years) is also required.

Enquiries about this programme from practitioners in other practice-based and clinical programmes such as medicine, ODP, pharmacy, and sport science and rehabilitation are encouraged.

How to apply

Anyone wishing to obtain funding via the SHA should apply through their NHS training department in the first instance. All other applicants should contact our Admissions Service at fhsc.admiss@hull.ac.uk or on 01482 466786/466770. Application forms are also available under 'Nursing' at www.hull.ac.uk/admissions.

Practitioner Research

PGCert (Postgraduate Certificate)

FastFacts

Duration | Part-time 1 year

Attendance | Half a day per week

Entry requirements | Normally a 2.1 Honours degree, but we will also consider candidates whose profile of academic and professional achievement demonstrates ability to study at Level 7

Fees | Applicants from the local area may be eligible for funding via our contract with the strategic health authority. There are also opportunities for self-funding. Current costs are available on the faculty website at www.hull.ac.uk/fhsc

Location | Hull Campus

Contact | Peter Draper, Programme Leader:
01482 454521 | p.r.draper@hull.ac.uk
Ros Glanville, Programme Secretary:
01482 464645 | r.j.glanville@hull.ac.uk

About the programme

This new programme is for any appropriately qualified health professional who wants to learn how to find research that is related to their field of practice, understand the methods used to conduct the research identified in the search, and then use that research to make a difference in the workplace.

Individual modules may be taken under the PDQS scheme. Please contact us for details.

Programme content

The programme comprises three modules – two core and one optional.

Core modules

- Literature Review Methods
- Advanced Health and Social Research

Optional modules

- Effective Health Care
- Making a Difference through Work-Based Learning

Further programme details

In Literature Review Methods you will learn about modern literature review methods, including the systematic review, and how to apply them in your area of practice. In Advanced Health and Social Research you will learn about different approaches to research and the professional contexts within which research is done. Whichever of the optional modules you choose, it will help you to apply the findings of research to your area of practice.

Assessment

There are various assessment methods, including writing a protocol for a literature review, a seminar presentation, a research proposal and a learning contract. The precise assessment profile may differ according to the option chosen.

Special features

- Choice of modules
- Blended approach to learning
- Clear focus on practice-relevant research
- Small-group teaching

How to apply

Anyone wishing to obtain funding via the SHA should apply through their NHS training department in the first instance. All other applicants should contact our Admissions Service at fhsc.admiss@hull.ac.uk or on 01482 466786/466770. Application forms are also available under 'Nursing' at www.hull.ac.uk/admissions.

Strategy, Policy and Leadership in Health and Social Care

PGCert (Postgraduate Certificate)

FastFacts

Duration | Part-time 1 year

Attendance | Half a day per week

Entry requirements | Normally a 2.1 Honours degree, but we will also consider candidates whose profile of academic and professional achievement demonstrates ability to study at Level 7. APEL will be considered where students are able to evidence achievement of any of the module learning outcomes

Fees | Most applicants from the local area will be eligible for funding via the Faculty of Health and Social Care's contract with the strategic health authority. There are opportunities for self-funding – further information will be provided on application

Location | Hull Campus

Contact | Tracey Heath, Programme Leader:

01482 464519 | t.n.heath@hull.ac.uk

Ros Glanville, Programme Secretary:

01482 464645 | r.j.glanville@hull.ac.uk

About the programme

It is important that leaders appreciate the external and internal contexts in which they operate and are able to locate their own roles within them. The overarching aim of the programme is to provide a high-quality educational experience that will inform and enhance your role as a leader. In line with this, the programme will enable you to

- clearly articulate your leadership role in the context of policy priorities
- clearly articulate the function of strategic thinking and influence in relation to your leadership role
- critically evaluate and develop your role as a leader and agent of strategic influence

Programme content

The programme comprises three modules:

- Self as Leader
- Developing Strategic Influence
- Leading and Managing in Context: A Policy Perspective

Further details can be found at www.hull.ac.uk/fhsc.

Further programme details

Various learning and teaching methods are used, including discussions, debates, seminars, workshops and lead lectures. Students are provided with directed-study materials both to support classroom-based sessions and to facilitate further independent enquiry. Structured group and individual tutorials are also provided.

The University's virtual learning environment (VLE) is used to provide access to learning resources, support online discussion and facilitate networking. Selected sessions are delivered via the VLE.

Assessment

Assessment strategies include critical evaluation of own leadership role, development plans and essays.

Special features

The special features of this programme include

- focus on the student's own personal and professional development as a leader and agent of strategic influence
- emphasis on the policy and political context in which leaders operate

How to apply

Anyone wishing to obtain funding via the SHA should apply through their NHS training department in the first instance. All other applicants should contact our Admissions Service at fhsc.admiss@hull.ac.uk or on 01482 466786/466770. Application forms are also available under 'Nursing' at www.hull.ac.uk/admissions.

Professional Development Qualification Scheme

Level 7

FastFacts

Contact | Pat Moody, Post-qualifying Coordinator:
01482 464662 | p.moody@hull.ac.uk

Application forms | Admissions Service: 01482 466770

About the scheme

The aim of the Professional Development Qualification Scheme (PDQS) is to give you an opportunity to study a 'stand-alone' module at Level 7 on a specific area of interest without having to commit to a full programme of study. Once registered on the programme, which lasts for one academic year, you can access up to three modules. Some students also use the scheme to find out whether they can study successfully at Level 7 before embarking on a full postgraduate programme. The faculty offers modules in Semesters 1, 2 and 3, and applicants can select one or more modules from those listed in the table.

Modules successfully completed as part of the PDQS can at a later date be counted as prior certificated learning towards the achievement of another award such as a Postgraduate Certificate, Postgraduate Diploma or MSc qualification. The requirements of the University's Accreditation of Prior Learning scheme must be met in order to progress to a higher award, as students must be able to fulfil the entry criteria for that programme.

Semester 1

Module title	Module no
Consultancy Skills	47580
Evidencing Personal and Professional Development	47123
Effective Health Care	47429
Self as Leader	47124
The Challenge of Change	48004
Practice Teaching in Context	47716
The Practice of Colonoscopy	47423
Research within the Clinical Sciences	47807
Advanced Critical Thinking	47720
Examination of the Newborn	47981
Philosophies and Ideologies in Public Health	47891
Advanced Critical Thinking Skills	47720
The Challenge of Change	48004

Semester 2

Module title	Module no
Advanced Health and Social Research	47728
Evidencing Personal and Professional Development	47999
Effective Health Care	47429
Making a Difference through Work-Based Learning	47578
Women and Mental Health	48803
Classic and Contemporary Issues in Healthcare Law and Ethics	47584
Developing Strategic Influence	47126
Effective Practice Teaching	47717
Understanding and Promoting Knowledge Transfer	47577
Education within the Clinical Environment	47805
Theoretical Principles of Colonoscopy	47421
Advanced Public Health Practice	47893
Advanced Health and Social Research	47728
Clinical Advancement/Innovation (work-based learning)	47892

Semester 3

Module title	Module no
Making a Difference through Work-Based Learning	47573
Understanding Commissioning and Influencing Policy	47895
Literature Review Methods	47576
Evidencing Personal and Professional Development	47941
Leading and Managing in Context: A Policy Perspective	47826



Research degrees

Doctor of Philosophy (PhD) | 26

Master of Philosophy (MPhil) | 27

Master of Research (MRes) | 28

Doctor of Philosophy

PhD in Nursing or Health Studies

FastFacts

Duration | Full-time 3 years; part-time 5 years

Attendance | Regular attendance for supervision meetings is required. You must also meet the requirements of the University's Postgraduate Training Scheme

Entry requirements | A good Honours degree in nursing, midwifery or another relevant discipline, plus appropriate experience in a professional environment. International students are required to have an IELTS score of 6 (5.5 in all skills)

Location | Hull Campus

Contact | Dr Pat Pearcey, Graduate Research Director:
01482 464525 | p.a.pearcey@hull.ac.uk
Dr Julie Jomeen, Director of Postgraduate Studies:
01482 464618 | j.jomeen@hull.ac.uk
Faculty of Health and Social Care, University of Hull,
Hull, HU6 7RX

About the programme

This programme is for nurses, midwives and members of related professions who wish to undertake a complex and original independent research project under the guidance of an experienced academic supervisor. It is aimed at professionals who wish to develop advanced research skills with a view to becoming independent researchers. It is therefore suitable for practitioners whose role involves a significant element of research (such as nurse consultants) or those who wish to develop a career in higher education. It is available for full- or part-time study.

The PhD programme involves a significant element of research training, leading to a Postgraduate Certificate or Diploma in Research Training. For those with limited experience of undertaking research, however, there is the opportunity to register for an MPhil (Master of Philosophy) programme in the first instance. You can then upgrade to PhD after one year of study (or two years part-time), depending on satisfactory progress.

Programme content

You will undertake an extended investigation under the guidance of an academic supervisor. A PhD is the ultimate form of student-centred learning. Although you will meet regularly with your supervisor and other postgraduate research students in the faculty and the Graduate School, you will need the ability and motivation to work independently. The precise scope of your investigation will be negotiated with your supervisor as part of the application process.

During the programme you will learn research methods, project management skills, skills of independent working, and advanced writing and presentation techniques. (You will select from a range of modules provided by the University under its Postgraduate Training Scheme.) You will also, of course, develop advanced theoretical knowledge of your subject area.

Assessment

At the end of the programme you will produce a thesis of up to 100,000 words which describes your research in detail. You will then have a formal oral examination in which questions about your research will be put to you by two examiners who are experts in your field.

Research groups

The main research activities of the Faculty of Health and Social Care are carried out within the following groups:

- Social Aspects of Cancer
- Global Health
- Reproductive, Maternal and Family Health
- Social and Therapeutic Inclusion

We particularly welcome applications in these areas but are very happy to discuss any potential project.

How to apply

If you are interested in registering for a PhD, please contact Dr Pat Pearcey (see 'FastFacts'). You will be asked to complete a simple application form and to write an outline research proposal explaining what you hope to investigate and the methods that you intend to use. Application forms are available at www.hull.ac.uk/pg.

Master of Philosophy (MPhil)

FastFacts

Duration | Full-time 2 years; part-time 3 years

Attendance | Regular attendance for supervision meetings is required. You must also meet the requirements of the University's Postgraduate Training Scheme

Entry requirements | A good Honours degree in nursing, midwifery or another relevant discipline, plus appropriate experience in a professional environment. International students are required to have an IELTS score of 6 (5.5 in all skills)

Location | Hull Campus

Contact | Dr Pat Pearcey, Graduate Research Director:
01482 464525 | p.a.pearcey@hull.ac.uk
Dr Julie Jomeen, Director of Postgraduate Studies:
01482 464618 | j.jomeen@hull.ac.uk
Faculty of Health and Social Care, University of Hull,
Hull, HU6 7RX

About the programme

This programme is for nurses, midwives and members of related professions who wish to undertake a complex research project under the guidance of an experienced academic supervisor. It is aimed at professionals who wish to develop their research skills to a high level and apply them in the context of their work. As such, it is suitable for practitioners whose role involves a significant element of research (such as nurse consultants and clinical specialists), or for those who wish to develop a career in higher education. The programme is available by full- or part-time study. It involves a significant element of research training, leading to a Postgraduate Certificate or Diploma in Research Training.

Programme content

You will undertake an extended investigation under the guidance of an academic supervisor. The MPhil is a research degree containing a significant element of student-directed learning. Although you will meet regularly with your supervisor and other postgraduate research students in the faculty and the Graduate School, you will need the ability and motivation to work independently. The precise scope of your investigation will be negotiated with your supervisor as part of the application process.

During the programme you will learn research methods, project management skills, skills of independent working, and advanced writing and presentation techniques. You will also develop your theoretical knowledge of your subject area. As part of the programme, you will select from a range of modules provided by the University as part of the Postgraduate Training Scheme.

Assessment

At the end of your programme of study you will produce a thesis of up to 70,000 words which describes your research in detail. You will then have a formal oral examination at which you will answer questions about your research, put to you by two examiners who are experts in your field.

Research groups

The main research activities of the Faculty of Health and Social Care are carried out within the following groups:

- Social Aspects of Cancer
- Global Health
- Reproductive, Maternal and Family Health
- Social and Therapeutic Inclusion

We particularly welcome applications in these areas but are very happy to discuss any potential project.

How to apply

If you are interested in registering for an MPhil, please contact Dr Pat Pearcey (see 'FastFacts'). You will be asked to complete a simple application form and write an outline research proposal explaining what you hope to investigate and the methods that you intend to use. Application forms are available at www.hull.ac.uk/pg.

Master of Research

(MRes)

FastFacts

Duration | Full-time 2 years; part-time 3 years

Attendance | 60 credits are obtained through successful completion of taught modules. You will need to attend regularly for academic supervision

Entry requirements | A good Honours degree in nursing, midwifery or another relevant discipline, plus appropriate experience in a professional environment. International students are required to have an IELTS score of 6 (5.5 in all skills)

Location | Hull Campus

Contact | Dr Pat Pearcey, Graduate Research Director:
01482 464525 | p.a.pearcey@hull.ac.uk
Dr Julie Jomeen, Director of Postgraduate Studies:
01482 464618 | j.jomeen@hull.ac.uk
Faculty of Health and Social Care, University of Hull,
Hull, HU6 7RX

About the programme

The MRes is for nurses, midwives and members of related professions who wish to learn more about research in an innovative, tailor-made programme combining taught and independent elements. You undertake 60 taught credits, all of which are part of the Postgraduate Training Scheme. In addition, you submit a dissertation to the value of 120 credits. If you wish, you may use the MRes as a basis for a PhD. This programme is ideal for those who have a clear interest in research but do not yet wish to commit themselves to a full PhD. It is suitable for practitioners whose role involves a significant element of research (such as nurse consultants or clinical specialists, or those aspiring to these roles), or those who wish to develop a career in higher education. The programme is available by full- or part-time study.

Programme content

You will undertake modules to the value of 60 credits in research methods, including quantitative and qualitative approaches. The modules are selected from those available with the advice of your supervisor and the Director of Postgraduate Studies. You will also submit a dissertation of 25,000–30,000 words on a research topic negotiated with your supervisor at the time of your application. The dissertation should contain an introduction, a literature review, research questions and a discussion of methodological issues, and is weighted at 120 credits. During the programme you will learn about different research methods, project management skills, skills of independent working, and skills in writing and presentation. You will also develop your theoretical knowledge of your subject area.

Assessment

Taught modules are assessed individually. Your dissertation will be examined by two examiners who are experts in your field.

Research groups

The main research activities of the Faculty of Health and Social Care are carried out within the following groups:

- Social Aspects of Cancer
- Global Health
- Reproductive, Maternal and Family Health
- Social and Therapeutic Inclusion

We particularly welcome applications in these areas but are very happy to discuss any potential project.

How to apply

If you are interested in registering for an MRes, please contact Dr Pat Pearcey (see 'FastFacts'). You will be asked to complete a simple application form and write an outline research proposal explaining what you hope to investigate and the methods that you intend to use. Application forms are available at www.hull.ac.uk/pg.

The International Office – further information

The International Office produces regularly updated information which may be of interest to you: for example, a Travel Guide and a Cost of Living booklet. If you would like to receive any of these publications, please go to

www.hull.ac.uk/international/resources

where they can be downloaded at appropriate times of the year. Alternatively, contact us at

International Office
University of Hull
Hull, HU6 7RX, UK
international@hull.ac.uk

Admissions

There is no single deadline for applications. We ask that your application reaches the University by 1 September (for a September start) or otherwise at least a month before your intended start date. Programme directors need time to ensure that places are offered only to those well qualified to achieve the high standards required for a UK postgraduate degree, so we recommend early enquiries (any necessary visa application may also take three to four months in some countries). Guidance on writing a research proposal for a research Masters or PhD degree is given on the Graduate School's website at www.hull.ac.uk/graduateschool.

Admissions Service
University of Hull
Hull, HU6 7RX
T 01482 466850
F 01482 442290
E pgstudy@hull.ac.uk

Application form

Our postgraduate application form may be downloaded from www.hull.ac.uk/admissions. You can also apply online from www.prospects.ac.uk. For PGCE apply via www.gttr.ac.uk; for MA Social Work via www.ucas.ac.uk.

Our other postgraduate brochures are ...

- Arts and Humanities
- The Business School (MSc Programmes and Hull MBA)*
- Education
- Health and Social Care
- Hull York Medical School
- The Law School
- PGCE
- Politics and Social Sciences
- Science

* The Business School also offers research (MRes and MPhil/PhD) opportunities



Picture credits

Page 5 © Andy Hall/ Oxfam; © iStockphoto.com/Pascalgenest

Page 24 © iStockphoto.com/RapidEye

Our hands-on courses produce nurses and midwives who are off the chart. At least half of your studies unfold in a clinical practice environment (within a local NHS trust, mentored by experienced practitioners), and you'll also hone your skills in our dedicated on-campus training facility.

Change the way you think.